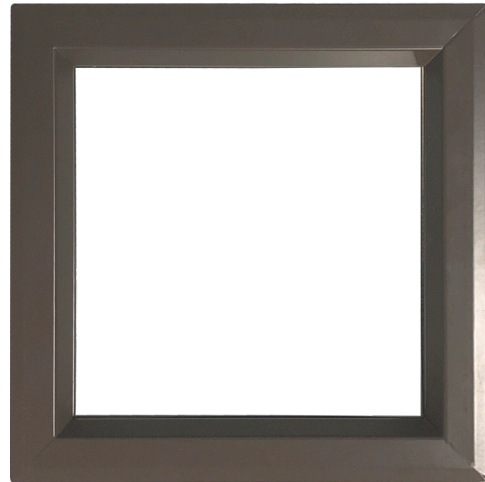




VSLH LOW PROFILE VISION LITE

SLIMLINE™ SERIES



The VSLH Generation of Slimline Vision Lites includes all of the benefits of the original VSL Design, but with a hem-strengthened profile that accommodates larger glazing up to 5/16" glass.

- Stronger hemmed frame profile with fasteners through the frame face on the room side
- Aesthetic, low profile frame mounts flush to door
- Easy installation with self-attaching frame with one-sided fasteners
- Fire-rated up to 3 hours with UL and up to 1-1/2 hours with Intertek
- Powder coat mineral bronze is standard, or select from other standard colors at no extra charge
- Wood veneer Woodlite version also available



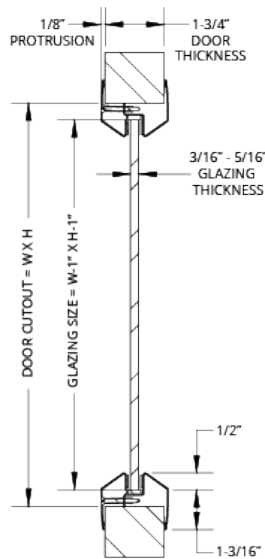
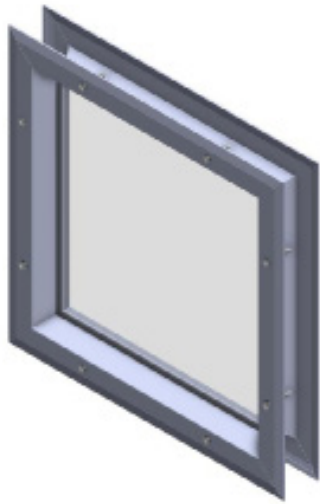
ACTIVAR CONSTRUCTION PRODUCTS GROUP INC.

1-800-554-6077 | SALES@ACTIVARCPG.COM

©2022 Activar Construction Products Group, Inc.

VSLH LOW PROFILE VISION LITE

SLIMLINE™ SERIES



SPECIFICATIONS:

Material: 20 gauge cold rolled steel

Finish: Mineral bronze powder coat

Fasteners: Flathead Phillips screws to match finish

Size: Minimum - 4" x 4", Maximum - 60" x 96"

Glazing Thickness: 3/16" - 5/16"

Door: 1-3/4"

OPTIONS:

Materials: 20 gauge 304 Stainless Steel, Galvannealed Steel, Zinc-Plated Steel.

Finish Colors: Nine additional powder coat paint colors at no charge.

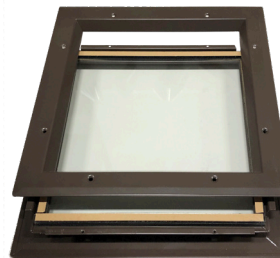
Mullions: 1" x 5/8" formed steel mullions, welded to both sides of vision lite at heads, sills and jambs, and butt to glass. Only (1) pane of glass required.

Other: Torx screws, Intertek Warnock Hersey label, UL10C.

VWLH Woodlite: .010 wood veneer, select from 8 options.

Ordering the VSLH Vision Lite as a "PAK" Conveniently includes:

- Glazing with Tape applied
- Vision Lite
- Individually Packaged



See Our Website and Submittal for Product Details and Order Information



ACTIVAR CONSTRUCTION PRODUCTS GROUP INC.

Visit www.activarcpkg.com for more info

1-800-554-6077 | SALES@ACTIVARCPG.COM

©2022 Activar Construction Products Group, Inc.

3-27-2024