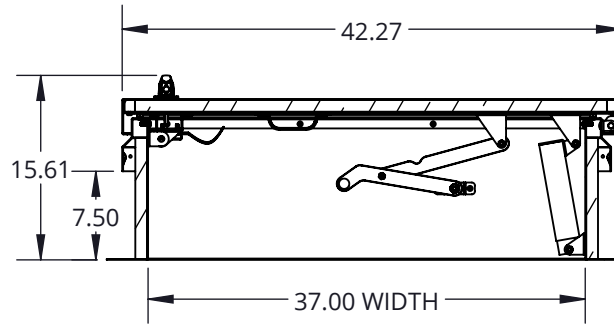
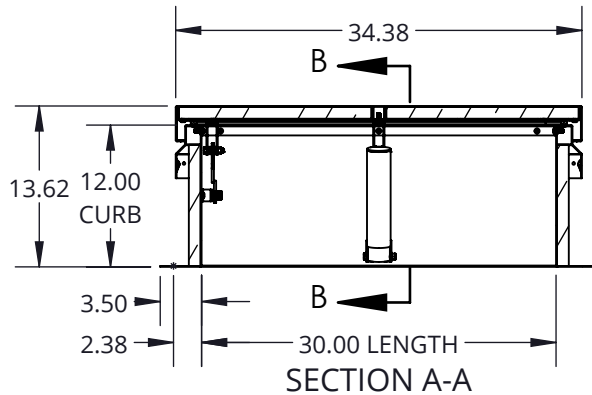
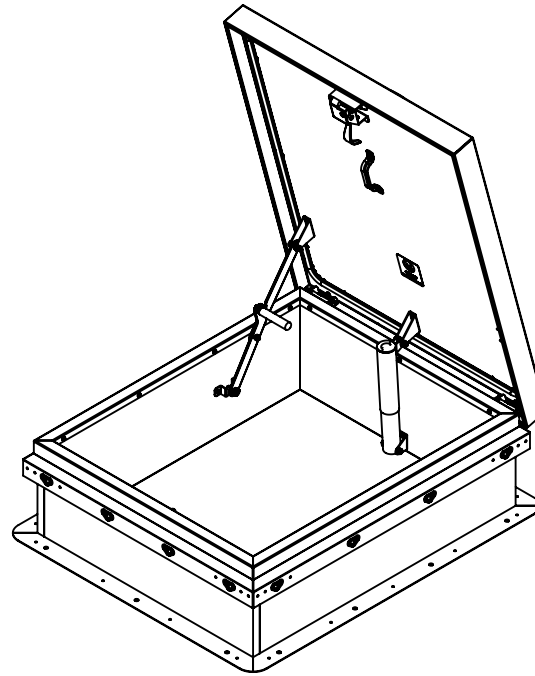
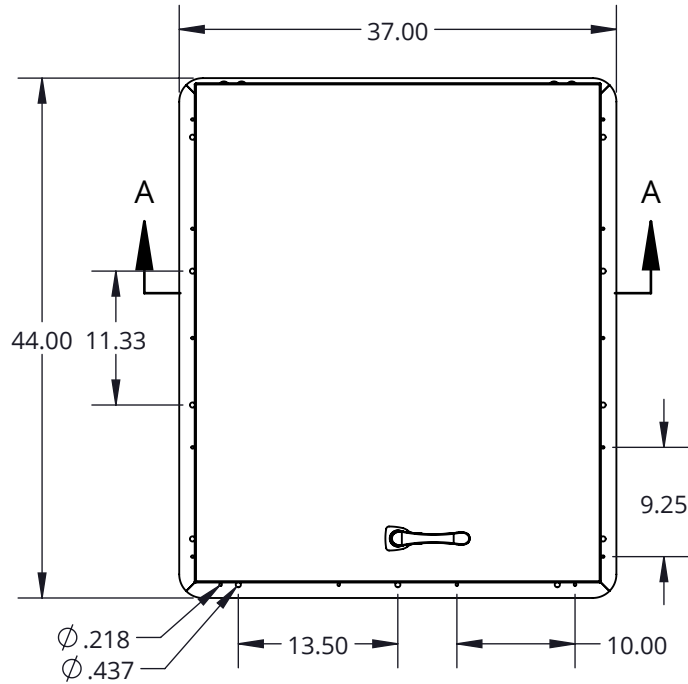


ROOF HATCH - Diamond Series™ - ROOF HATCH, DIAMOND SERIES 37 X 30 I GALV STEEL, WHITE TEXTURED



SECTION B-B

SPECIFICATIONS:

Curb: 14 gauge galvanized steel single wall curb and counterflashing with Diamond Grip.

Cover: 14 gauge galvanized steel formed, welded cover with 22 gauge liner, tested to support a live load of 40psf.

Finish: White, textured powder coat paint.

Gasket: Continuous, weatherproof EPDM sponge rubber adhesive-backed seal.

Insulation: 1" polyisocyanurate in curb and cover with thermal resistance R-6.

Spring: Counterbalanced compression springs contained in clear zinc-plated steel cylinders.

Latch: Clear zinc-plated steel slam latch with inside and outside handles and padlock hasps.

Hold Open Arm: Clear zinc-plated automatic locking hold open arm with red vinyl grip for one handed door operation.

Hinge: Heavy duty clear zinc-plated steel hinges with pin.

Notes:

For pitched roofs up to 7:12, mount hinge side parallel to slope.

Door opens 75°

Clear Opening: 26" X 24"

Weight: 140lbs

Diamond Series™ is a trademark of Activar Construction Products Group Inc.

MODEL #: RHDG-7WT



JL INDUSTRIES

9702 Newton Avenue S, Bloomington, MN 55431

800-554-6077

sales@activarcpg.com

www.activarcpg.com

Distributor:		Project:	
Contractor:		Approved By:	
Date:		Architect:	
Scale: 1:16.25	Page: 1 OF 1	Drawing #: RHDG-7WT-SUBMITTAL	