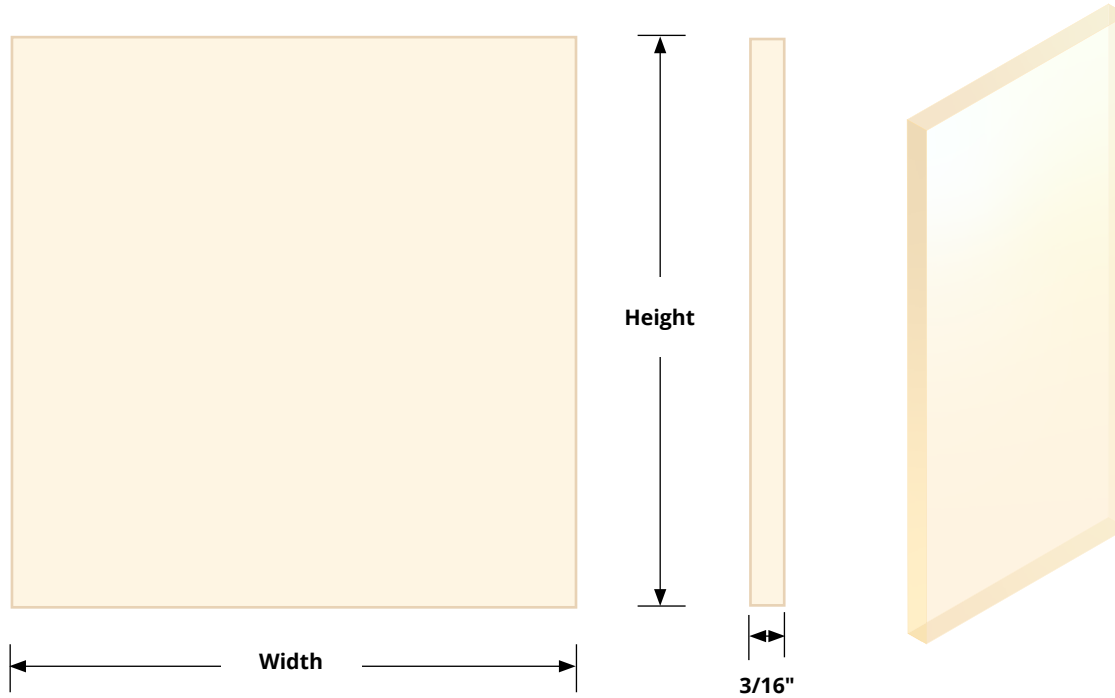


GLAZING - FIRELITE® NT GLAZING - FL - Fire-Rated Safety Glazing

FireLite NT is a 3/16" (5 mm) thick fire-rated and impact safety-rated glazing material. It is listed for use in door vision lites, sidelites and transoms based on rating duration and corresponding maximum exposed area, width and height.



COMMON SIZES FIRELITE NT

QTY	MODEL	WIDTH x HEIGHT	FIRE RATING
	FL-1111	11" x 11"	180 minutes
	FL-0434	4" x 34"	180 minutes
	FL-0526	5" x 26"	180 minutes
	FL-0621	6" x 21"	180 minutes
	FL-2323	23" x 23"	90 minutes
	FL-2329	23" x 29"	90 minutes

SPECIFICATIONS:

Material: Glass ceramic with ultra HD technology for improved surface quality and color and a high performance surface-applied fire-rated film

Thickness: 3/16" (5 mm)

Weight: 2.56 psf

Light Transmission: 88%

Visible Reflection: 9%

STC: 35

Size: Reference chart on page 2

Minimum: 4" x 4"

Stock Sheet Size: 48" x 96"

Order size is actual glass size

RATINGS:

Fire Rating: 20,45,60,90,180 Minutes based on size and application. UL classified and labeled UL9, UL10B, UL10C, CAN/ULC-S104, CAN/ULC-S106

Impact Safety Rating: CPSC 16CFR 1201 (Cat I & II), ANSI Z97.1

Warranty: Three year limited

Compatible Frames: Slimline VSLH, EZLine VLFEZ, ThruBoltLine VLF

OPTIONS & ACCESSORIES:

Finishes: Frosted

Tape: Standard glazing tape or high temperature tape applied to both sides of glazing

Please consult with your AHJ to make sure your glazing complies with local ordinances before ordering.

TAPE WHEN SOLD SEPARATELY

Qty	Model	Description / Dimensions
	GTAPE 200B	Standard glazing tape 1/16" 1/16" thick x 3/8" wide x 200 ft
	GTAPEK-0L-33W	High temperature tape 3/16" thick x 9/16" wide x 32.8 ft

Refer to glazing tape submittal for more information



AIR LOUVERS

800-554-6077
 sales@activarcpg.com
 www.activarcpg.com

9702 Newton Ave S. Bloomington, MN 55431 | Many Locations Nationwide

Distributor:		Project:
Contractor:		Approved By:
Date:		Architect:
Scale: N/A	Pages: 1 of 2	Item #:

GLAZING - FIRELITE NT GLAZING - FL - Fire-Rated Safety Glazing



RATING (MINUTES)	UL TESTED MAX EXPOSED DIMENSIONS		GLAZING "BUG" MARKING	GLAZING TAPE REQUIREMENTS
	WIDTH	HEIGHT		

Doors

20/45/60	36"	89"	D-H-60 OH-60	-GTAPE 200B Standard glazing tape 1/16"
	3204 sq in			
90	36"	56-½"	D-H-90 OH-90	-GTAPEK-0L-33W High temperature tape
	2034 sq in			
	36"	56-½"		-GTAPE 200B Standard glazing tape 1/16"
180	12"	33"	D-H-180	-GTAPE 200B Standard glazing tape 1/16"
	100 sq in			

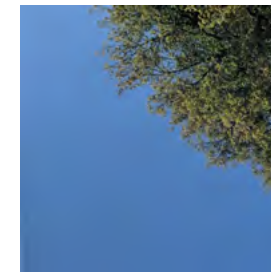
Window, Transom, Sidelite

20/45/60	95"	95"	D-H--60 OH-60	-GTAPE 200B Standard glazing tape 1/16"
	3325 sq in			
90	56-½"	56-½"	D-H-90 OH-90	-GTAPEK-0L-33W High temperature tape
	2627 sq in			
	56-½"	56-½"		-GTAPE 200B Standard glazing tape 1/16"
	1393 sq in			

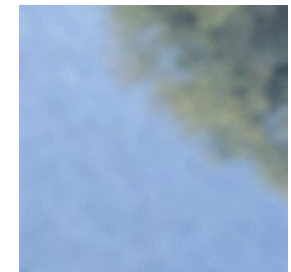
Maximum size is determined by the glass listing (in doors) and door manufacturing listing. The combined height and width cannot exceed the maximum exposed glazing area measurement. Interpretation of Fire and Building Codes may vary. Consult with the Local Authority Having Jurisdiction (AHJ) to determine appropriate standards.

MADE-TO-ORDER FIRELITE NT - EXAMPLE: FL-1333-FFT

QTY	MODEL	- WIDTH	HEIGHT -	(GLAZING TAPE APPLIED)	(FINISH OPTIONS)
<input type="text"/>	FL FireLite NT	<input type="text"/>	<input type="text"/>	(None)	(None)
				T (Standard tape 1/16")	FF Frost
				K (High temperature tape)	



No Finish



Frost