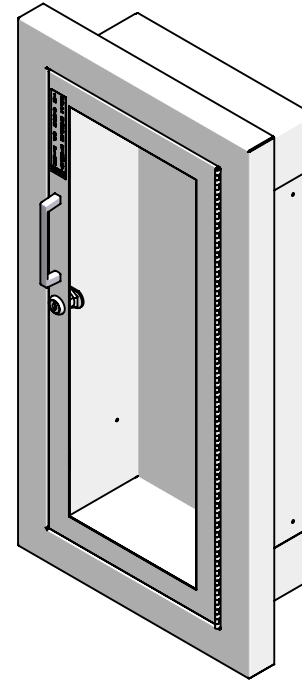
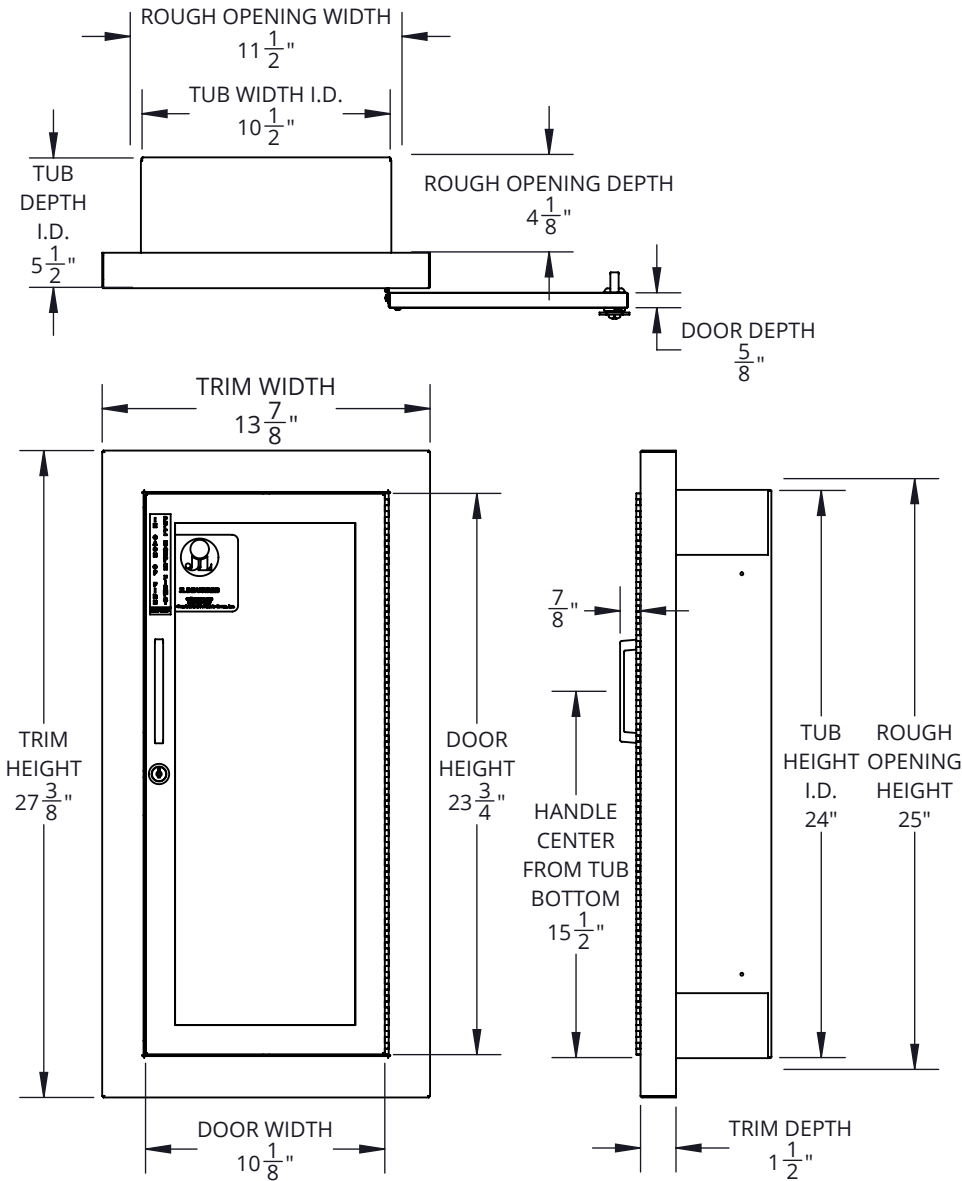


Architectural Series, Fire Protection Cabinet, Ambassador - C1816G10
 FE CABINET, AMBASSADOR, 1-1/2" SQ TRIM, FL VIEW SAFTLOK, CLR ACR, ALL CRS, ALL WHT, 18 SERIES



SPECIFICATIONS:

- Tube Material:** 24 gauge galvanized steel
- Trim Material & Style:** 20 gauge CRS, semi-recessed 1-1/2" square edge
- Door Material & Style:** 20 gauge CRS, full view
- Glazing:** .090" clear acrylic (8-1/2" x 22-3/4")
- Finish:** Powder coat white door and trim, painted white tub
- Hinge:** Continuous hinge opens door 180 degrees
- Hardware:** Zinc plated pull handle, Saf-T-Lok™, glass clips & screws
- Rough Opening:** 11-1/2 x 25" x 4-1/8"
- Fire Rating:** Not rated
- ADA Compliant:** Cabinet meets 4" maximum protrusion. Locate handle maximum 48" above floor.
- Compatible Extinguishers:** Cosmic 2.5lb. - 6lb., Galaxy 2.5 - 5lb, Mercury 2.5lb. - 5lb

MODEL # BREAKDOWN:

- C — Product Line:** Fire protection, cabinet
- 18 — Tub Size:** 10-1/2" x 24" x 5-1/2"
- 1 — Trim and Door Material:** CRS, powder coat finish
- 6 — Trim Style:** Semi-recessed 1-1/2", square edge
- G — Door Style:** Full glazing, pull handle, Saf-T-Lok™
- 10 — Door Glazing:** 0.090" clear acrylic
 - Color: All white

REPLACEMENT PARTS:

- Tub:** TUB-18-PP
- Trim:** T-1016
- Door:** D-101G
- Glazing:** G10F10
- Hardware Pack:** HPFPUS, SL, LC

MODEL #: C1816G10



800-554-6077
 sales@activarcpg.com
 www.activarcpg.com

9702 Newton Ave S. Bloomington, MN 55431 | Many Locations Nationwide

Distributor:		Project:
Contractor:		Approved By:
Date:	Quantity:	Architect:
Scale: 1:8.125	Pages: 1 OF 1	Drawing #: C1816G10-SUBMITTAL