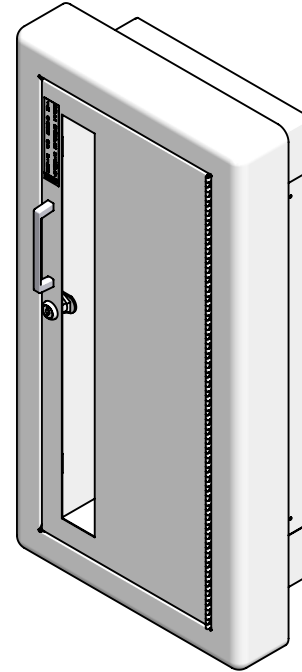
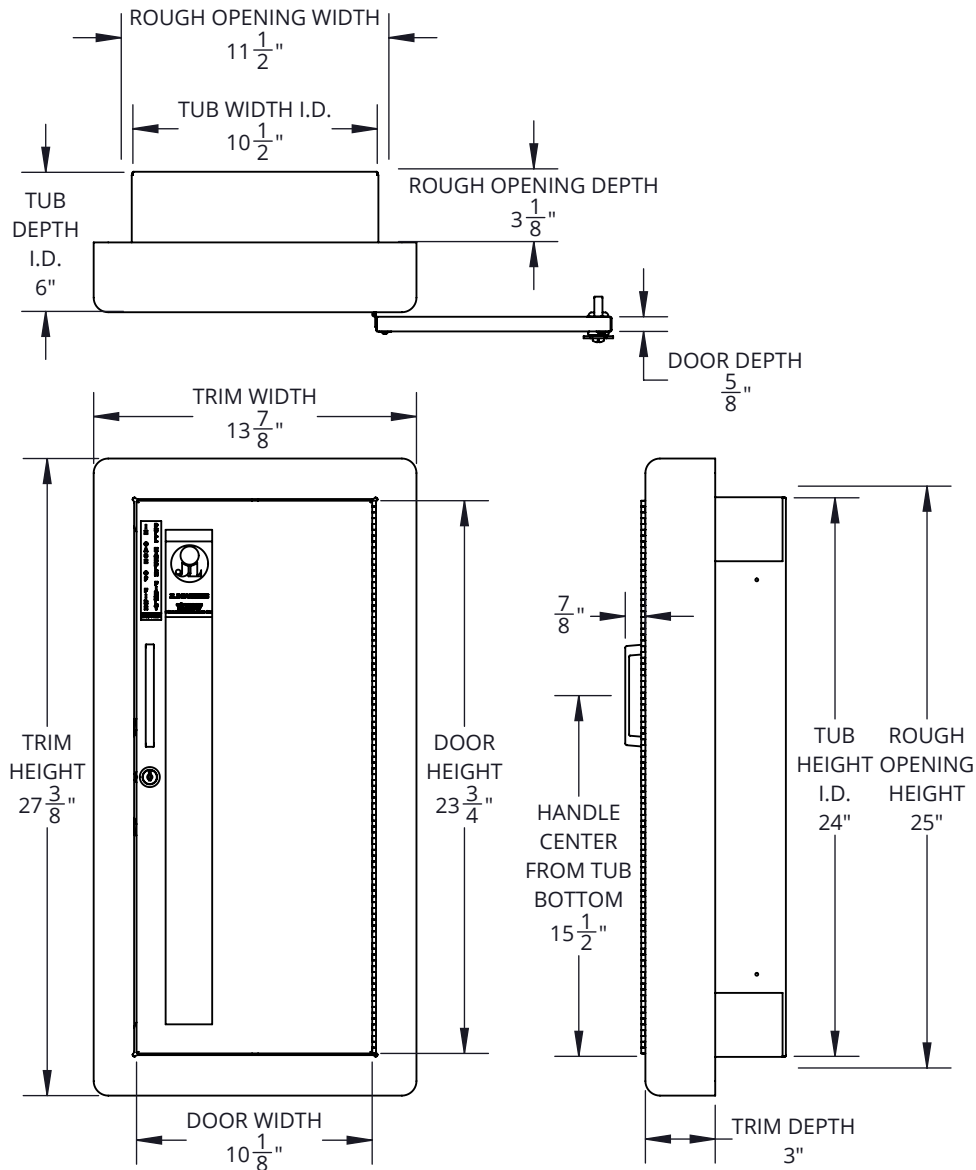


Architectural Series, Fire Protection Cabinet, Ambassador - C1017W10
FE CABINET, AMBASSADOR, 3" RT, VERT DUO SAFTLOK, CLR ACR, ALL CRS, ALL WHT, 10 SERIES



SPECIFICATIONS:

- Tube Material:** 24 gauge galvanized steel
- Trim Material & Style:** 20 gauge CRS, semi-recessed 3" rolled edge
- Door Material & Style:** 20 gauge CRS, vertical duo
- Glazing:** .090" clear acrylic ($8\frac{1}{2}$ " x $22\frac{3}{4}$ ")
- Finish:** Powder coat white door and trim, painted white tub
- Hinge:** Continuous hinge opens door 180 degrees
- Hardware:** Zinc plated pull handle, Saf-T-Lok™, glass clips & screws
- Rough Opening:** $11\frac{1}{2}$ x 25" x $3\frac{1}{8}$ "
- Fire Rating:** Not rated
- ADA Compliant:** Cabinet meets 4" maximum protrusion. Locate handle maximum 48" above floor.
- Compatible Extinguishers:** Cosmic 2.5lb. - 6lb., Galaxy 2.5 - 5lb, Mercury 2.5lb. - 5lb.

MODEL # BREAKDOWN:

- C — Product Line:** Fire protection, cabinet
- 10 — Tub Size:** $10\frac{1}{2}$ " x 24" x 6"
- 1 — Trim and Door Material:** CRS, powder coat finish
- 7 — Trim Style:** Semi-recessed 3", rolled edge
- W — Door Style:** Vertical duo, pull handle, Saf-T-Lok™
- 10 — Door Glazing:** 0.090" clear acrylic
- Color:** All white

REPLACEMENT PARTS:

- Tub:** TUB-10-PP
- Trim:** T-1017
- Door:** D-101W
- Glazing:** G10F10
- Hardware Pack:** HPFPUS, SL, LC

MODEL #: C1017W10



800-554-6077
 sales@activarcpg.com
 www.activarcpg.com

9702 Newton Ave S. Bloomington, MN 55431 | Many Locations Nationwide

| | | |
|---------------|---------------|-------------------------------|
| Distributor: | | Project: |
| Contractor: | | Approved By: |
| Date: | Quantity: | Architect: |
| Scale: 1:8.25 | Pages: 1 OF 1 | Drawing #: C1017W10-SUBMITTAL |