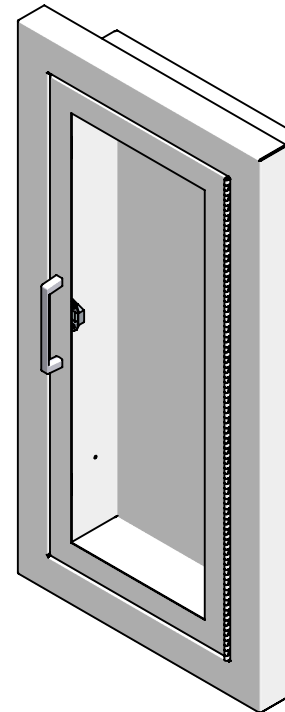
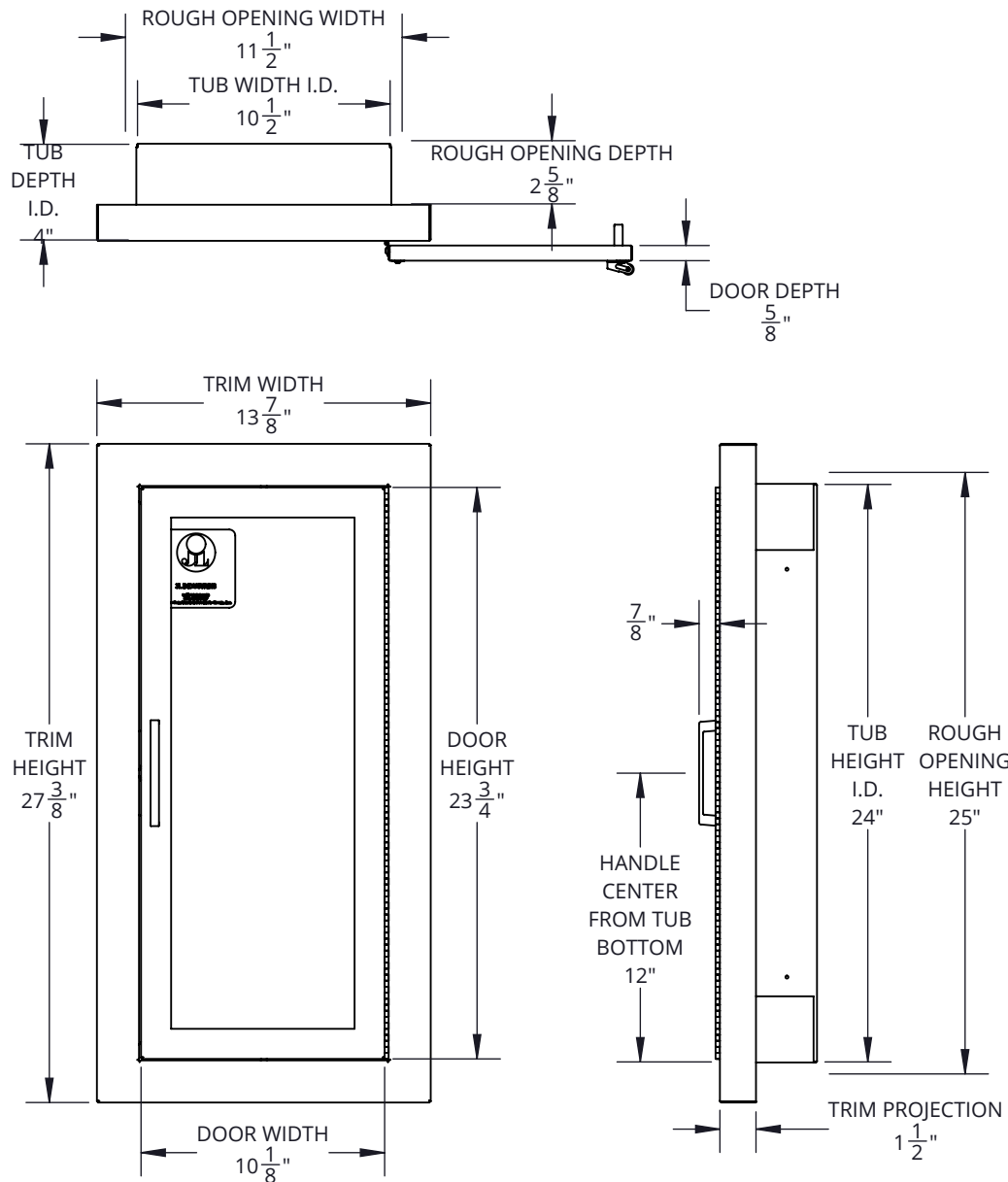


Architectural Series, Fire Protection Cabinet, Clear VU - C1516F25

FE CABINET, CLEARVU, 1-1/2" SQ TRIM, FULL VIEW, CLR BUBL, CRS TUB, CRS DR/TRM, ALL WHT, 15 TUB



SPECIFICATIONS:

Tub Material: 24 gauge galvanized steel

Trim Material & Style: 20 gauge CRS, semi-recessed 1-1/2" square edge

Door Material & Style: 20 gauge CRS, full view

Glazing: 0.090" clear polycarbonate bubble (8-1/2" x 22-1/2")

Finish: Powder coat white door and trim, painted white tub

Hinge: Continuous hinge opens door 180 degrees, 20 gauge CRS powder coat white

Hardware: Zinc plated pull handle, roller catch, glass clips & screws

Rough Opening: 11-1/2" x 25" x 2-5/8"

Fire Rating: Not rated

ADA Compliant: Cabinet meets 4" maximum protrusion, locate handle maximum 48" above floor

Compatible Extinguisher: Cosmic 2.5lb. - 10lb., Galaxy 2.5lb - 10lb., Mercury 2.5lb. - 5lb., Sentinel 5lb.

MODEL # BREAKDOWN:

C — Product Line: Fire protection, cabinet

15 — Tub Size: 10-1/2" x 24" x 4"

1 — Trim and Door Material: CRS, powder coat finish

6 — Trim Style: Semi-recessed 1-1/2" square edge

F — Door Style: Full view, pull handle, roller catch

25 — Door Glazing: 0.090" clear polycarbonate bubble

— Color: All white

REPLACEMENT PARTS:

Tub: TUB-15-PP

Trim: T-1016

Door: D-101F

Glazing: BCV10F25

Hardware Pack: HPPFUS

MODEL #: C1516F25



800-554-6077
 sales@activarcpg.com
 www.activarcpg.com

9702 Newton Ave S. Bloomington, MN 55431 | Many Locations Nationwide

Distributor:		Project:
Contractor:		Approved By:
Date:	Quantity:	Architect:
Scale: 1:7.75	Pages: 1 OF 1	Drawing #: C1516F25-SUBMITTAL